

GREAT LAKES INDIAN FISH & WILDLIFE COMMISSION

P. O. Box 9 • Odanah, WI 54861 • 715/682-6619 • FAX 715/682-9294



• MEMBER TRIBES •

MICHIGAN

Bay Mills Community
Keweenaw Bay Community
Lac Vieux Desert Band

WISCONSIN

Bad River Band
Lac Courte Oreilles Band
Lac du Flambeau Band

MINNESOTA

Fond du Lac Band
Mille Lacs Band

2019 SPRING MIZISE (TURKEY) HUNTING REGULATIONS MINNESOTA 1837 CEDED TERRITORY - MILLE LACS BAND

NOTE: The rules summarized in this leaflet are the minimum rules applicable to tribal members hunting turkeys off-reservation. **YOUR TRIBE MAY HAVE IMPOSED ADDITIONAL RESTRICTIONS OR REQUIREMENTS.** Check with your conservation department to see a complete copy of your tribe's ordinance, or to see if additional regulations apply to your hunting activities.

PERMITS: You must have a valid 2019 small game hunting permit in order to hunt turkeys in the spring season.

HUNTING HOURS: 30 minutes before sunrise to 30 minutes after sunset.

SPRING SEASON DATES: April 13 - May 31.

WILD TURKEY HUNTING UNITS: The attached map displays tribal wildlife management units and the ceded territory boundary. The entire Minnesota portion of the 1837 Ceded Territory is open for turkey hunting except for the Sherburne National Wildlife Refuge. For zones that border the ceded territory, you may hunt the portion of these units that are within the ceded territories. (Contact refuge staff regarding possible youth and disabled hunter spring turkey hunting opportunities.)

CARCASS TAGS: You must obtain a current year's carcass tag from a tribal warden or your tribal conservation department *before* going hunting. Generally, one carcass tag will be issued at a time; additional tags may be obtained after registering a turkey. Upon killing any turkey you must immediately affix a carcass tag to it.

REGISTRATION: All turkeys harvested must be registered. You may do this by presenting the entire carcass to a band or GLIFWC warden or at a tribal registration station no later than 5:00 p.m. of the next working day following the harvest, **or by calling 844-234-5439.** You will need information from your hunting license, county and unit of harvest, and sex and age of the turkey to register your harvest. **Report the unit of harvest using the map found on the next page.** (See the *Harvest Regulations* link at www.glifwc.org for sexing criteria.)

ALLOWABLE METHODS: No member shall hunt wild turkeys:

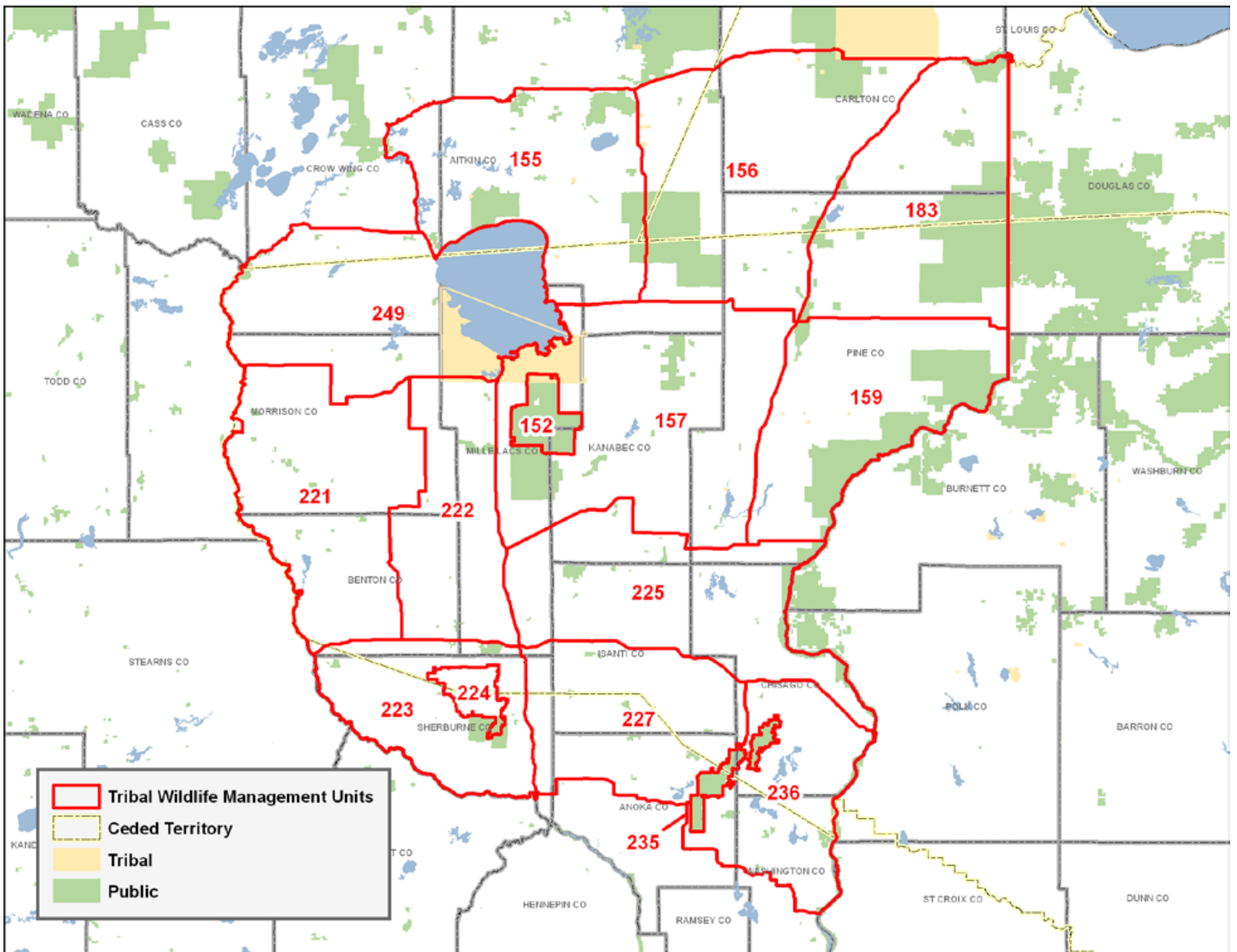
- a) By any means other than a 20 gauge or larger shotgun or muzzle-loading shotgun 12 gauge or larger, using fine shot size No. 4 or smaller diameter, or a bow and arrow or a crossbow.
- b) With the aid of recorded bird calls or sounds or electrically amplified imitations of bird calls or sounds.
- c) With the aid of dogs.
- d) With live decoys for the purpose of enticing wild turkeys.

(REGULATIONS ARE CONTINUED ON THE BACK)

OTHER RESTRICTIONS:

While hunting turkeys you must also comply with all other restrictions which apply to hunting generally, or to small game hunting specifically.

MINNESOTA TRIBAL WILDLIFE MANAGEMENT UNITS



HAVE A SAFE AND SUCCESSFUL SEASON!