



***TRIBAL GATHERING ON STATE LANDS WITHIN  
THE PORTION OF THE CEDED TERRITORY  
LOCATED IN THE STATE OF WISCONSIN***

—

***PUBLIC LANDS OPEN TO TRIBAL GATHERING***

**VERSION 1: November 2010**

**Great Lakes Indian Fish & Wildlife Commission**  
Biological Services Division / Division of Intergovernmental Affairs  
72682 Maple St., P.O. Box 9  
Odanah, WI 54861  
(715) 682-6619

## ***TABLE OF CONTENTS***

<b>INTRODUCTION .....</b>	<b>Page 1</b>
<b>PUBLIC LANDS OPEN TO TRIBAL GATHERING .....</b>	<b>Page 2</b>
<b>REFERENCES .....</b>	<b>Page 17</b>

## ***INTRODUCTION***

The intent of this publication is to provide a readily accessible means of identifying *Public Lands Open to Tribal Gathering* applicable to the Voigt Treaty Off-Reservation Conservation Code.

The contents of this publication may be modified on occasion. Please contact the Biological Services Division or the Division of Intergovernmental Affairs of the Great Lakes Indian Fish and Wildlife Commission to confirm the most recent update or see the GLIFWC website at <http://www.glifwc.org>.

# ***PUBLIC LANDS OPEN TO TRIBAL GATHERING***

## **REGULATIONS**

In the areas designated as open for tribal gathering on state lands within the portion of the ceded territory located in the State of Wisconsin, no member shall gather on any state lands except as listed in this document. In regard to any permit issued, a member must comply with all regulations established in Chapter 12 of the Voigt Treaty Off-Reservation Conservation Code and must also comply with all other terms and conditions of the permit as imposed by the Tribe.

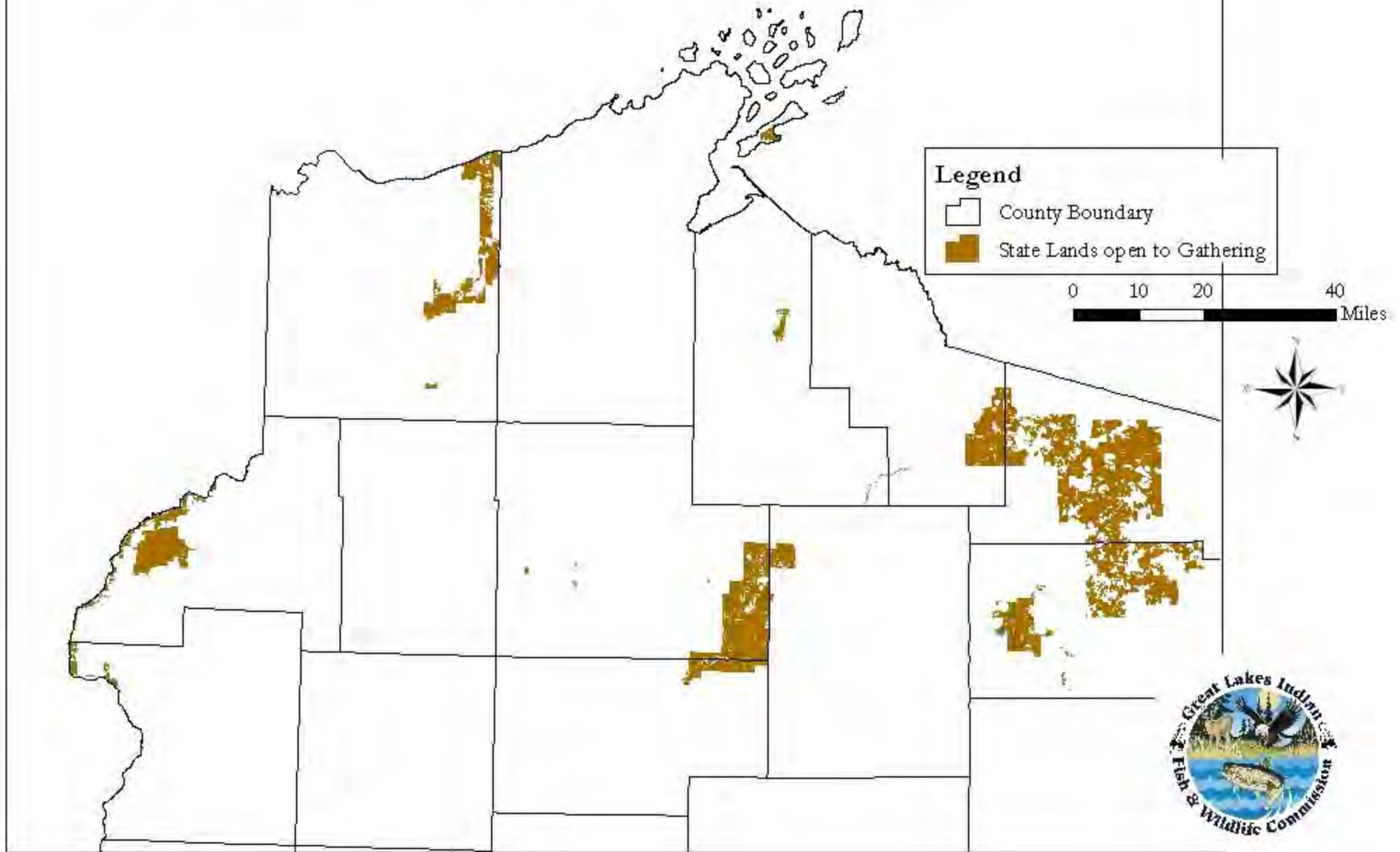
## **PUBLIC LANDS OPEN TO TRIBAL GATHERING**

- (1) Brule River State Forest**
- (2) Flambeau River State Forest**
- (3) Governor Knowles State Forest**
- (4) Northern Highland – American Legion State Forest**
- (5) Big Bay State Park**
- (6) Copper Falls State Park,**
- (7) Willow Flowage Scenic Waters Area**
- (8) Crex Meadow Wildlife Area**
- (9) Powell Marsh Wildlife Area**
- (10) Eddy Creek Fishery Area**

## **MAPS OF PUBLIC LANDS OPEN TO TRIBAL GATHERING**

Maps showing *Public Lands Open to Tribal Gathering* are reprinted in the following pages. Tribal members must take notice of the restricted area in these maps. Larger copies of these maps and other relevant maps are available from each tribal registration station, each tribal conservation department, GLIFWC and the GLIFWC website at <http://www.glifwc.org>.

# Voigt Stipulations - Gathering on State Properties



## ***REFERENCES***

### **REFERENCES**

Voigt Treaty Off-Reservation Conservation Code.